

Special Exhibition

“The Hospitality of Businessmen: Shibusawa Eiichi and the Imperial Hotel”



February 14, 2014

The Unknown Story of the Imperial Hotel before Frank Lloyd Wright’s Renovation

From March 15 to May 25, 2014, the Shibusawa Memorial Museum will present an exhibition entitled “The Hospitality of Businessmen: Shibusawa Eiichi and the Imperial Hotel.” The exhibition is part of the Shibusawa Memorial Museum’s ongoing “Tracing the Origins of Companies” exhibition series that explores the various companies with which Shibusawa Eiichi was connected.

This time the exhibition focuses on the Imperial Hotel, Ltd., which was established in 1890 and will be celebrating its 125th anniversary next year, making it one of a few companies established in the Meiji period (1868-1912) to be still in operation today. Eiichi was involved with the Imperial Hotel from its establishment in 1890 until 1909, when he retired from his position as chairman of the board of directors. The exhibition focuses on this period, aiming to give a glimpse of Eiichi’s trials and tribulations in connection with the hotel, the training of personnel, the use of the Imperial Hotel by businessmen and their personal interactions.

“The Hospitality of Businessmen: Shibusawa Eiichi and the Imperial Hotel”

Organized by:	Shibusawa Memorial Museum
With support from:	Imperial Hotel, Ltd.
Dates:	Saturday, March 15 – Sunday, May 25, 2014
Hours:	10:00 – 17:00 (last entry by 16:30)
Closed:	March 17, 24, 25, 31; April 7, 14, 21, 28, 30; May 7, 12, 19
Venue:	Special Exhibition Hall, Shibusawa Memorial Museum (2-16-1 Nishigahara, Kita-ku, Tokyo)
Admission:	Adults 300 yen, children (up to 18 years) 100 yen Group rates and other discounts available.

Exhibition Outline:

- Prologue – The Road to the Establishment of the Imperial Hotel
- Chapter 1 – The People involved in Establishment
- Chapter 2 – Imperial Hotel Illustrated News
- Chapter 3 – Shibusawa Eiichi’s Thoughts on the Imperial Hotel
- Chapter 4 – The Hospitality of Businessmen
- Chapter 5 – Celebratory Banquets
- Epilogue – 125 Years of History and the Present and Future of the Imperial Hotel

Contact: Shibusawa Eiichi Memorial Foundation
Public relations: Ruri Kato; Curator: Hitoshi Sekine
Tel. 03-3910-0005 Fax.03-5567-7289

Shibusawa Foundation

search

or visit www.shibusawa.or.jp/english for details.

Symposium:

Title: Modern Japan and the Imperial Hotel

Panelists: Tetsuro Inumaru, Deputy General Manager, Imperial Hotel Tokyo

Nobuyuki Okamoto, Professor Emeritus, Rikkyo University

Kaoru Iokibe, Associate Professor, The University of Tokyo

Moderator: Masato Kimura, Director, Research Department, Shibusawa Eiichi Memorial Foundation

Date: Saturday, April 26, 2014 14:00-16:30

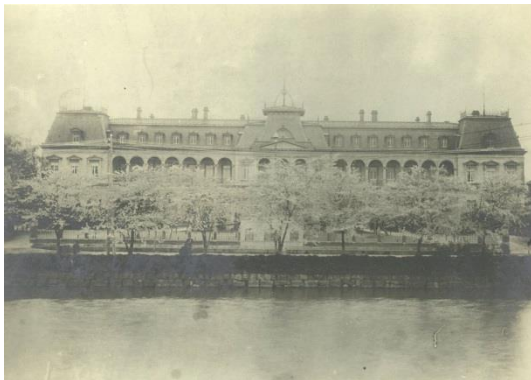
Venue: Shibusawa Memorial Museum

Attendance limited to 40 (reservations required).

No fee beyond regular museum admission is required.

The symposium is in Japanese only.

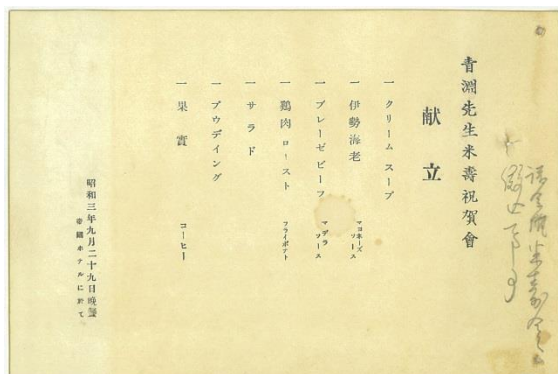
Images for Press Use:



1) The Imperial Hotel at the time of its Establishment



2) *Tōkyō Teishin Kanri-kyoku* (Tokyo Communications Bureau) Members Appreciation Banquet (at the Imperial Hotel, 1912)



3) Menu for Shibusawa Eiichi's 88th Birthday Banquet (at the Imperial Hotel, 1928)