

Exhibition “The Shibusawa Warehouse Co., Ltd. and Shibusawa Eiichi”



No. 2011-04, March 1, 2012

From March 17 to May 27, 2012, the Shibusawa Memorial Museum will present an exhibition entitled “The Shibusawa Warehouse Co., Ltd and Shibusawa Eiichi.”

The exhibition aims to shine a light on the essential role of warehouses and logistics in the development of economy and industry by exploring the role of Shibusawa Eiichi in Japan’s logistics industry as seen through his relationship with the Shibusawa Warehouse Co., Ltd.



Calligraphy by Shibusawa Eiichi “Think of trust as the foundation of all things”
From the collections of the Shibusawa Warehouse Co., Ltd

“The Shibusawa Warehouse Co., Ltd. and Shibusawa Eiichi”

Organized by: Shibusawa Memorial Museum, Shibusawa Eiichi Memorial Foundation

Supported by: Shibusawa Warehouse Co., Ltd.

Dates: Saturday, March 17 – Sunday, May 27, 2012

Hours: 10:00 – 17:00 (last entry by 16:30)

Closed: Mondays (except April 30), March 21, May 1 and May 8

Venue: Special Exhibition Hall, Shibusawa Memorial Museum
(2-16-1 Nishigahara, Kita-ku, Tokyo)

Admission: Adults 300 yen, children (up to 18 years) 100 yen

Groups of 20 or more: adults 240 yen, children (up to 18 years) 80 yen per person

Lecture:

Title: Industrialists and the Foundation of the Modern Warehouse Industry: Shibusawa Eiichi’s Vision for Logistics

Speaker: Mr. Hirokazu Magarida, Chitahanto Regional Development Institute, Nihon Fukushi University

Date: Saturday, April 14, 2012 13:30-15:00

Venue: Seien Bunko, Shibusawa Memorial Museum

Attendance limited to 40 (reservations required).

No fee beyond regular museum admission is required.

The lecture is in Japanese only.

Shibusawa Foundation

search

or visit www.shibusawa.or.jp/english for details.

Contact:

Shibusawa Eiichi Memorial Foundation

Public relations: Ruri Kato

Curator: Koichi Kuwabara

Tel. 03-3910-0005 Fax.03-5567-7289

Exhibition Synopsis:

Among the roughly 500 companies in which Shibusawa Eiichi was involved, only the Shibusawa Warehouse Co., Ltd. still bears the name “Shibusawa” today.

As early as at the beginning of the Meiji era, Eiichi believed in the necessity of building warehouses all over Japan to encourage modern industry and mobilize logistics. He argued that an independent warehouse industry should be formed to develop a modern warehouse system in Japan, to store commodities, issue temporary receipts and encourage the smooth flow of finances.

It was upon this foundation that the Shibusawa Soko-bu (Shibusawa Warehouse Section) was established at the Shibusawa residence in Fukagawa Fukuzumi-cho, Tokyo, under the leadership of Eiichi’s eldest son, Shibusawa Tokuji. The Shibusawa Soko-bu expanded its business and, in July 1909, was established as the Shibusawa Warehouse Co., Ltd. The Company went on to play an active role in reforming the warehouse system and influence modern Japanese logistics.

Exhibition Outline:

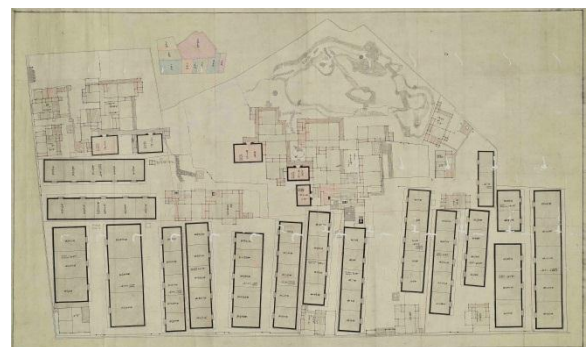
Introduction	Make Fukagawa a Logistics Hub: Shibusawa Eiichi’s Vision for Logistics
Chapter 1	The Return of the Warehouse Industry to Fukagawa: The Birth of the Shibusawa Warehouse Co., Ltd.
Chapter 2	The Warehouse Industry is a “Public Affair”: The Revolution of Logistics
Chapter 3	Reconstruction After the Great Kanto Earthquake and a New Concept of Logistics
Conclusion	Shibusawa Eiichi Lives on in the Shibusawa Warehouse Co., Ltd.

Main items to be exhibited:

- Letter from Yutaka Aoki, employee of the Soko Gaisha of 2-chome Fukagawa Saga-cho, to Shibusawa Eiichi, December 27, 1882, from the collections of the Shibusawa Memorial Museum
- Articles of Incorporation of the Shibusawa Warehouse Co., Ltd., June 10, 1909, from the collections of the Shibusawa Warehouse Co., Ltd.
- Tokyo Harbor Reconstruction Proposed Site Inspection Tour Map, *Minutes of the Branch Managers’ Meeting*, April 1931, from the collections of the Shibusawa Warehouse Co., Ltd.
- List of dedicators and dedications to the Fukuzumi Inari Shrine, July 1931, from the collections of the Shibusawa Warehouse Co., Ltd.



Unloading commodities by conveyer belt at the Kayaba-cho riverside warehouse, Shibusawa Warehouse Co., Ltd., 1929, from the collections of the Shibusawa Warehouse Co., Ltd.



Plan of the Shibusawa residence at Fukagawa Fukuzumi-cho at the time of the establishment of the Shibusawa Soko-bu, March, 1897, from the collections of the Shibusawa Warehouse Co., Ltd.